



Nu Flow re-lines at The Towers, Paal

Location: The Towers, Paarl, Western Cape

Situation:

Water Damage Services' camera technicians inspected a line that had a 3cm by 3cm hole allowing water to escape through one of the storm water pipes into the slab of the building below.

This caused massive leaks into the basement of this building causing disruption to the flow of traffic.

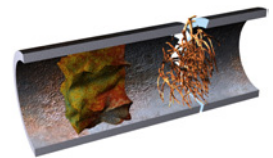
Chopping this pipe out was not an option as the pipe was situated within a structural pillar for an 18 storey building and chopping open this pillar may compromise this buildings structural integrity.

Solution:

Water Damage Services, a Nu Flow licensee used the Nu flow pull in place lining system to re-line this pipe without any damage to the pillars or walls. Water Damage Services were able to inflate an epoxy liner over this hole creating pipe where there was no pipe before.

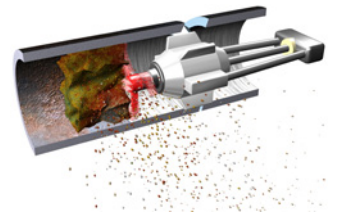
The end result is a new pipe with in the old pipe.
No Mess, no chopping open, damage to structures!

How it Works



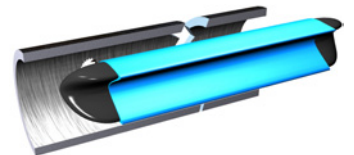
Step 1

An inspection camera is sent down the pipe to reveal blocked and damaged areas.



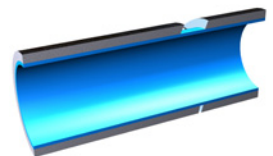
Step 2

The pipe is cleaned with a cutting tool.



Step 3

A felt liner soaked in epoxy is pulled into place. Within the liner is an inflatable bladder. When the liner is in place the bladder is inflated.



Step 4

The epoxy is left to cure. After curing the bladder is removed leaving behind a structural "pipe within a pipe"

**Interested in Nu Flow pipe re-lining?
Want to become a Nu Flow installer?
Contact us:**

(+27) 11 425 3379

www.nuflow.co.za

info@saleak.co.za