

Leaking Pipes?



Why re-pipe?
There's a better way!

**39 Wolmarans st, Braamfontein,
 Johannesburg, South Africa**

How it Works

Step 1

The pipe is tested for leaks.

Step 2

An abrading agent is then air blasted through the pipe to remove all rust and corrosion products.

Step 3

An epoxy mixture is then blasted through the pipe with conditioned air to uniformly distribute the epoxy lining through out the pipe segment.

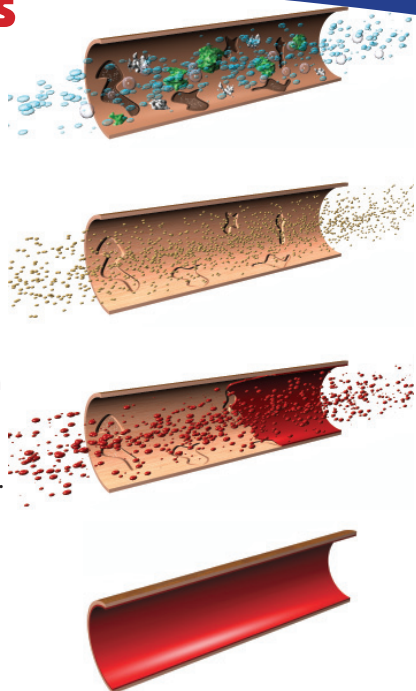
Result

The result is a **relined pipe**, repaired from the inside.

No damage to structures!

No chasing walls!

No digging!



From 15mm - 300mm

AC / Copper / PVC/HDPE / Earthenware / Galvanized

Nu Flow re-lines the main line at Transnet buildings in Braamfontein, Johannesburg

Situation:

The 50mm galvanized potable main-line into the building and header tanks was leaking and flooding the basement of the building. The pipe runs beneath a concrete slab and with-in the basement walls. Replacing the pipe was not an option. Transnet turned to Nu Flow instead.

Solution:

Nu Flow South Africa re-lined the 50mm main-line with an epoxy coating with out having to chop through the concrete slab and basement walls. The job took Nu Flow a fraction of the time that replacing the pipes would have taken. The end result is a re-lined pipe, repaired from the inside.

For more information on Nu Flow drain and potable water pipe relining or on becoming a Nu Flow licensee please contact us

(+27) 11 425 3379
 www.nuflow.co.za
 info@saleak.co.za

