



Leaking Pipes?

Why re-pipe?

There's a better way!



Nu Flow re-lines deteriorated sewer line at Westgate Shopping Centre

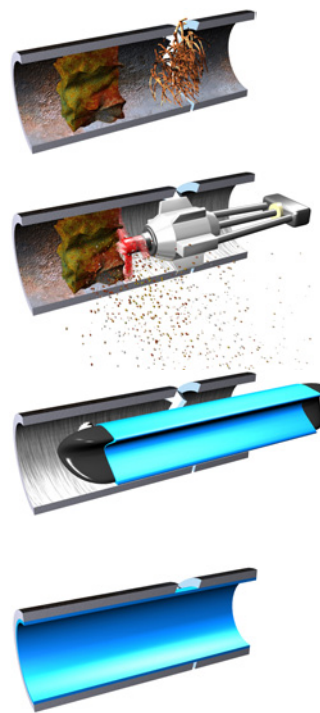
Location: Westgate, Roodepoort, Gauteng

Situation: A deteriorated sewer line at the Westgate shopping centre was the cause of much frustration as the staff toilets had been blocking for some time on a regular basis. This caused another problem as the effluent would, once blocked, flow into the passage leading to the mall.

Watertight Leak Detection was called in to assess the extent of the damage of the pipes.

Solution: Watertight Leak Detection decided to use the Nu Flow technology and re-line a section of the pipe in question in a blue epoxy structural liner which was pulled in place through the existing rodding eyes and manholes avoiding extensive excavating and inconvenience to the centre, staff and key tenants.

The end result is a "nu pipe" with in the old pipe.
No Mess, no chopping open, no damage to structures!



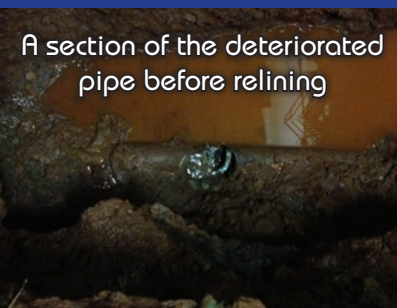
How it Works

Step 1 – An inspection camera is sent down the pipe to reveal blocked and damaged areas.

Step 2 – The pipe is cleaned with a cutting tool.

Step 3 – A felt liner soaked in epoxy is pulled into place. Within the liner is an inflatable bladder. When the liner is in place the bladder is inflated.

Step 4 – The epoxy is left to cure. After curing the bladder is removed leaving behind a structural "pipe within a pipe"



A section of the deteriorated pipe before relining

**Interested in Nu Flow pipe re-lining?
Want to become a Nu Flow installer?
Contact us:**

(+27) 11 425 3379
www.nuflow.co.za
info@saleak.co.za



After re-lining