



Relining at Total house in Rosebank

Customer:
 Total House, Rosebank

Situation:
 Total House, Rosebank were experiencing problems with a 300mm concrete storm water pipe which was broken in sections and leaking into the basement parking lot. The 40 meter long pipe runs between the ground level and basement parking lots making a traditional pipe replacement an unviable option. Total House turned to Nu Flow for a noninvasive solution.

Solution:
 Nu Flow first camera inspected the line to identify the problematic areas and determined how much piping was in need of lining. The pipe was then cleaned using high pressure jetting. Nu Flow then relined the pipe with Nu Flow's structural lining technology. An epoxy saturated liner was pulled into the pipe. Within the liner is a rubber bladder which was inflated when the liner was in position. The bladder was left inflated until the epoxy had cured. Once the epoxy had cured, the bladder was removed leaving behind a 'nu pipe' within the host pipe. The relining was done working from either end of the pipe thereby causing absolutely no disruption to the Total House parking lot.

Drain pipe relining How it Works

Step 1

An inspection camera is sent down the pipe to reveal blocked and damaged areas.

Step 2

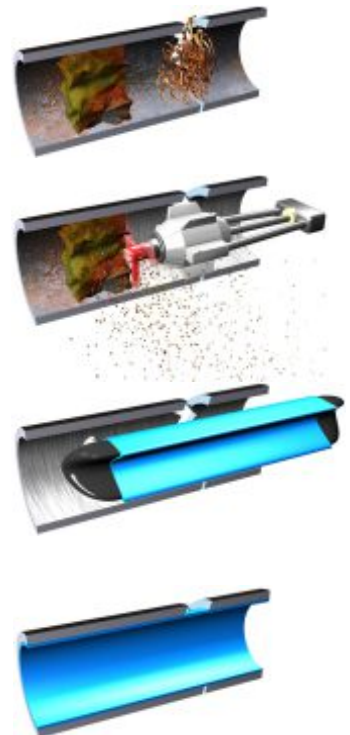
The pipe is cleaned with a cutting tool.

Step 3

A felt liner soaked in epoxy is pulled into place. Within the liner is an inflatable bladder. When the liner is in place the bladder is inflated.

Step 4

The epoxy is left to cure. After curing the bladder is removed leaving behind a structural pipe within a pipe.



**No mess! No noise!
 No Damage! No Chopping open!**

**Need relining done?
 Want to become a Nu Flow Installer?
 Contact us:**

**086 1 NU FLOW
 info@nuflow.co.za
 www.nuflow.co.za**