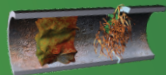


REPAIR YOUR PIPES FROM THE INSIDE WITH NUFLOW.

NuFlow is a proven technology that's faster and less expensive than pipe replacement. Pipe lining repairs your pipes from the inside to a better-than-new condition, without digging.

STEP 1: INSPECTION

Inspect the existing pipes for any corrosion, roots, or cracks using a drain camera.



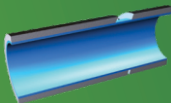
STEP 2: CLEANING

Debris, roots and corrosion are removed from the pipes using NuFlow's proprietary tools.

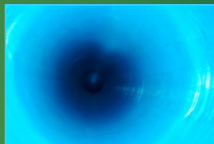


STEP 3: LINING

NuFlow liner is pulled into the pipe and cures in place, creating a clean, strong "pipe within a pipe." A final inspection is performed for quality assurance.



Before



After

Educational Services Sector

Departmental Heads of any school, College or University have to not only make decisions on what is the most cost effective way to fix a pipe problem; they also have to be mindful of the inconvenience this will cause the tenants.

Because Nu Flow has the ability to fix both pressurized piping systems and non-pressurized piping system using existing access points, Nu Flow offers the least disruptive and most viable option for pipe renewal.

Whether your piping issue is related to drain pipes failing from root intrusion, structural failure, copper pinhole leaks or even corroded galvanized pipes, Nu Flow's proven track record and international installation experience will help you solve your piping concerns with minimal disruption to your daily operations.

CALL TODAY FOR AN ESTIMATE!



Rehabilitation of a Multi-sized Pipeline

Industry/Market: Educational Services Sector Organization, PTA

Situation: The facility management team of a college in Pretoria reached out to Nu Flow due to consistent blockages and leaks in the drainage system. Located in the heart of Pretoria central, it was suspected that the drainage system was quite old and in need of replacement.

Upon conducting a CCTV Pipeline Inspection, multiple displaced joints and intruding junctions were discovered in the 18.2-meter pipeline, confirming the need for rehabilitation.

Solution: Traditional replacement was not possible due to structural disruption and interference with the structural integrity of the building so Nu Flow offered an innovative solution that allowed for the internal rehabilitation of the line, without causing disruptions. After carefully assessing the client's requirements and project specifications, Nu Flow decided to utilize 18.2 meters of DN200 - DN300 3HT Glass reinforced Liner, coupled with Nu Flow's patented NuDrain 2K Epoxy System.

The chosen liner offers numerous advantages, particularly in this case, as it can start at the minimum diameter of DN200 and expand up to the largest diameter of DN300 within the multi-sized pipeline, all in a single installation process.

Nu Flow has able to create a new, seamless pipe within the old, damaged host pipes.

